

DC/DC Converters, High Power

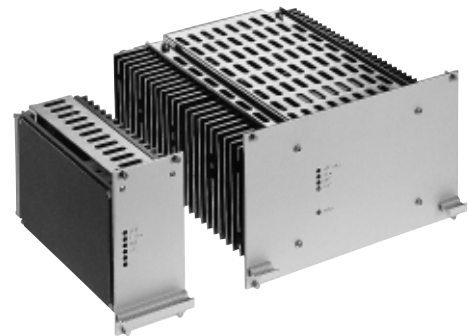
**POWER
SOLVE**

www.powersolve.co.uk

TSC Series, 150W–5000W

- = Plug-in Modules for 19"-Subracks
- = Robust mechanical Design for Industrial Applications
- = Input Voltages: from 10 to 800 VDC
- = Also AC-Input 115/230 VAC or 400/480 VAC 3P
- = Standard Models with Output Voltages up to 400 VDC
- = EMI complies with EN 55022, Class A
- = Available with many Standard Options

Line regulation:	±0.1% max.
Load regulation:	±0.2% max.
Ripple & Noise:	<1% Vout + 30 mVpk-pk (20 MHz BW)
Conducted EMI:	EN 55022, Class A
Short circuit protection:	continuous, automatic recovery
Overvoltage protection:	105% of Vout
Efficiency:	85% typ.
Operating temperature range:	-20°C ... +75°C
I/O isolation voltage:	2100 VDC (Vin < 60 VDC) 3500 VDC (Vin > 60 VDC & VAC input models)
Safety standards:	IEC/EN 60950



Models

Input voltage range	Output power	Output voltage range
		4.5 – 5.5 VDC
		8 – 10 VDC
		11 – 13 VDC
10 – 16 VDC	Models with 150W – 5000W available	14 – 16 VDC
18 – 36 VDC		23 – 26 VDC
36 – 75 VDC		26 – 30 VDC
80 – 160 VDC		45 – 55 VDC
160 – 320 VDC		58 – 68 VDC
320 – 640 VDC		100 – 130 VDC
450 – 800 VDC		200 – 250 VDC
		380 – 400 VDC
		570 – 600 VDC
		760 – 800 VDC

- Options:
- Inrush current limiting
 - Input voltage: 115/230 VAC, single phase or 200/400/480 VAC, three phase
 - Input polarity protection
 - Output decoupling diode for redundant / parallel operation
 - Active current sharing for parallel operation
 - Remote On/Off (inhibit)
 - Output programmable via analogue signal
 - Monitoring of input and output voltage
 - RS232 or IEEE488 interface
 - Wall mounting
 - Increased mechanical strength
 - Tropical protection

For model selection contact sales office.

Dimensions

Power [Watts]	Width [mm]	Depth [mm]	Height [mm]
150	71	160	133 3(U)
250	107		
500	213		
400	107	220	267 6(U)
800	213		
200	51	160	267 6(U)
400	71		
600	107		
1200	213		
850	107	220	267 6(U)
1250	142		
1700	213		
2500	284	300	267 6(U)
2500	142		
5000	284		